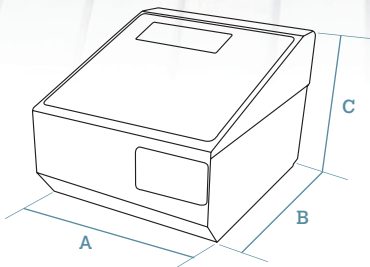


# LP-500 series



## Dimensions



DATA IN mm

A	285
B	285
C	240

Weight with packaging: 9.0 kg.



1 PRINTER 2" LABELS



LCD GRAPHIC DISPLAY



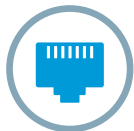
UP TO 10,000 PLUS



UP TO 20 OPERATORS



CONNECTABLE TO PLATFORM UP TO 4 LOAD CELLS



ETHERNET TCP/IP



USB OPTIONAL



WI-FI OPTIONAL



METROLOGICAL VERIFICATION OPTIONAL (EU)

## Model

	Display	Printer	PLUs	Direct PLUs	Operators	Power	Reference
LP-545	Graphic LCD	Labels (or Receipts)	10,000	80x2	20	Mains	7L453020IZ__

**M** optional

# Characteristics and functionality

## Main characteristics

- High performance label printer (suitable also for receipts).
- Compliance with EU Regulation 1169/2011 on the provision of food information to consumers.

## Features

- Extensive information for each PLU: normal price and offer price, price for weight scales and by kg/100 g, 3 names of 20 characters or 2 names of 30 characters, 20 free texts of 24 characters, 1 text of 3,000 characters, etc.
- PLU search by number or name.
- Preset keys to programming menus: to change prices, register PLUs or vendors, etc.
- Direct access to 999 PLUs from the keyboard.
- Printing of the labeller menus.
- Programmable macros: recording of a sequence of keys to create direct access to any task (reopening of receipt, lists, change in batcher number, etc.). LP-500 labellers have as many macros as direct PLU keys, besides 10 specific macros keys.
- Sales and management reports: sales (by article, vendor, time frames, last month, etc.), modified PLUs, etc.
- Fast and reliable communication between labellers, with PC and mobile devices (via DWS).
- Option to record normal price and offer price for each article.
- Stock management by article.
- Piece counting function.

## Weighing

- Connection to 1 or 4 load cells platform.

## Construction

- Stainless steel casing.
- Access to all non-metrological components without the need to unseal the labeller.

## Display

- LCD matrix graphic display.
- 2 selectable screens: full information (weight, price / kg, tare, operators and article's name) or weight only (with checkweighing function).

## Keyboard

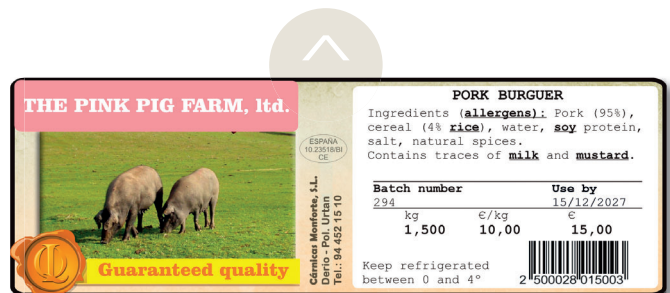
- 150 keys (15 x 7).
- 80 x 2 article preset keys (direct PLUs).

## Printer

- Label printer (also suitable for receipts by changing the paper roll and the working mode).
- 54 mm thermal printer.
- Resolution: 8 dots/mm; speed: 100 mm/sec.
- Cassette for immediate paper roll change (included).
- Optional:
  - > Linerless.

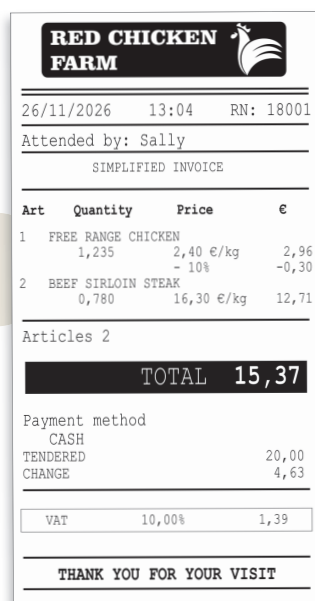
## Labels

- 15 fonts (6 monospaced + 9 multispaced: more modern and legible).
- From W30 x L30 mm to W60 x L150 mm.
- 20 fixed formats + 40 programmable formats.
- 100 logos.
- Barcodes: EAN-13, EAN-128 and Code 128.
  - > QR codes on request.
- 60 fields of information.
- 100 programmable texts.
- Manual and automatic pre-packing modes.
- 3 levels of totals.
- Printing of "n" identical labels.
- Printing with 90°, 180° and 270° rotation.
- Automatic adjustment of the paper detection sensor.
- Checkweigher function: it only prints the label if the product is between a pre-established minimum and maximum weight.
- Packaging date, expiry date and extra date (for any application).
- Alphanumeric batch number.
- 10 types of generic traceability (for meat, fish, fruits, vegetables, etc.) up to 99 products. Included in the prevailing European legislation on bovine traceability.



## Receipts

- 15 fonts (6 monospaced + 9 multispaced: more modern and legible).
- Up to 75 items.
- 2 fixed formats + 2 programmable formats.
- 4 logos.
- Barcodes: EAN-13, EAN-128 and Code 128.
- Name of vendor.
- 9 payment methods.
- Total in national currency and other 3 currencies.
- Discounts per line and total.
- Loyalty points.
- Customers on account.
- Recipes.



## Food information

- Compliance with EU Regulation 1169/2011 on the provision of food information to consumers as of 13 December 2016:
  - > Minimum letter size: 1.2 mm.
  - > Effect (**bold**, underlined, or **both**) for each character in the text.
  - > Possibility of using the general text "G" (3,000 characters) for ingredients, in lower case or UPPER CASE to highlight allergens.
  - > Possibility of including a table of nutritional facts.
  - > Free texts (20 x 24 characters).
  - > For direct sale receipts and labels: possibility of indicating in the PLU name (with an \* or other symbol) those that contain allergens and programming a text, such as "\* Consult allergens".
  - > Possibility of printing 2 labels for each operation: programmable by PLU, configurable information, 2<sup>nd</sup> automatic or manual label (also to be used as promotional labels).

## Communications

- TCP/IP Ethernet for interconnection and connection to PC.
- RS-232, for connection to scanner.
- Optional:
  - > USB.
  - > Wi-Fi.

## Security

- Access to different protected programming menus via configurable passwords.

## Interconnection

- Up to 16 Dibal LP-500 labellers or 16 Dibal Star and D-500 series scales.

## Connectivity with other devices

- PC.
- Barcode scanner (powered by the labeller -5 VDC-) to read EAN-13 and EAN-128 barcodes.

## Possible integration with other equipment

- 1 or 4 load cells weighing platforms.
- Dibal weight indicators.
- Other LP-500.
- Dibal Star and D-500 series scales.

## Software

(See section on software)

### PC software:

- DFS:
  - > Programming of labellers.
  - > Receipt of sales data.
  - > Data backup copy.
  - > Graphic design of receipts and labels.
- Integration tools: in Windows or Linux to facilitate communication with the Back Office.

### Labeller firmware:

- DWS (Dibal Web Server):
  - > Allows access to the information on each labeller from any computer or mobile device with an Internet browser.

## Power supply

- Mains: 110 or 230 VAC.

## Energy consumption

- 5.6-90 W (depending on the conditions of use).

# Options

Option	Characteristics	Ref.
Linerless	Label or receipt on continuous adhesive paper without supporting paper.	Consult
USB	USB port.	Consult
Wi-Fi	Wireless communications (IEEE 802.11n).	Consult
DFS Software	Labeller configuration, receipt of sales data for processing with other IT applications and data backup (LBS), and labels and receipts graphic design (DLD). (See section on software).	7340F1U1
		7340FNU1
		7340D1U1
		7340DNU1
Technical DWS Firmware	For the remote configuration of the labeller. (See section on software).	7340W101
Full DWS Firmware	For the remote configuration of the labeller and processing of the information generated. (See section on software).	7340WN01
Metrological verification (M)	Metrological verification (M), according to EU weighing directives. (See section on equipment metrological verification).	Consult

# Accesories

## Barcode scanner

Includes RS-232 connection cable.



Ref: P11554

## Barcode scanner

Includes USB connection cable.



Ref: 497449A

## Barcode scanner

- Wireless.

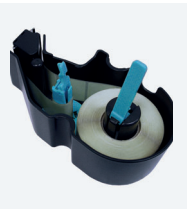
Includes the connection cable between the scanner's wireless base and the labeller.



Ref: BC-668

## Additional cassette

For receipt or label rolls.



Ref: BCES0007

## Adapter for receipt printing in 2" label printer

Required for standard size receipt rolls.



Ref: BL-P4642

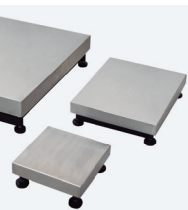
## Adapter for printing narrow labels



Ref: 497540A

## ME/MA Series single load cell platform (mono-range)

(See section on Platforms for further information).  
For multi-range option, consult.



Ref: Consult

## Linerless label box (30 rolls)

Roll width: 58 mm.  
Roll length: 65 mm.  
Core inner diameter: 40 mm.  
Outsite diameter of the roll: 97 mm.



Consult

## Linerless label pallet (60 boxes)

Roll width: 58 mm.  
Roll length: 65 mm.  
Core inner diameter: 40 mm.  
Outsite diameter of the roll: 97 mm.



Consult

### Note:

- The references correspond to standard models: Stainless steel casing, backlit LCD segment display, USB connector and TCP/IP Ethernet communications.