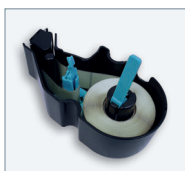


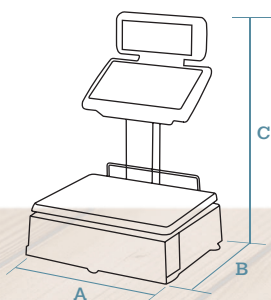
1 LABEL PRINTER (OR RECEIPT)

Double Body format



Cassette included.

Dimensions



DATA IN mm

- A** 375
- B** 470
- C** 547

Plate dimensions:
L360 x W280 mm.
Weight with packaging: 15 kg.



	Displays	Printer	PLUs	Direct PLUs	Vendors	Power	Capacity / Accuracy	Reference
D-545 DB	Segments LCD	Labels (or Receipts)	10,000	40x2 +9x2*	20	Mains	6 kg / 2 g - 15 kg / 5 g	7D051K2LGE_

M optional

* Using the Shift key and those of Vendor.

ELECTRONIC SCALES

D-500 series





1 PRINTER
RECEIPTS
OR LABELS



EASY LOADING
RECEIPT PRINTER
(DEP. ON MODEL)



LINERLESS
(DEP. ON MODEL)



LCD SEGMENTS
DISPLAY
(7" DEP. ON MODEL)



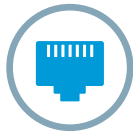
LCD GRAPHIC
DISPLAY
OPTIONAL



UP TO
10,000 PLUs



UP TO
20 VENDORS



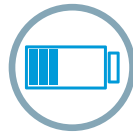
ETHERNET
TCP/IP



USB
OPTIONAL



WI-FI
OPTIONAL



INTERNAL RECHARGEABLE BATTERY
OPTIONAL



METROLOGICAL VERIFICATION
OPTIONAL (EU)

Characteristics and functionality

Main characteristics

- Electronic scale with higher visibility display options.
- Models with receipt printer, label printer (suitable for receipts) or easy loading printer (for immediate loading of receipts).
- Variety of formats.
- Functional and robust design.
- Mechanical keyboard (up to 20 vendors, 99 direct PLUs and 999 from the keyboard).
- Greater capacity (memory, functions, communications and interconnections).
- Compliance with EU Regulation 1169/2011 on the provision of food information to consumers.

Features

- Extensive information for each PLU: normal price and offer price, price for weight scales and by kg/100 g, 3 names of 20 characters or 2 names of 30 characters, 20 free texts of 24 characters, 1 text of 3,072 characters, etc.
- PLU search by code or name.
- Preset keys to programming menus: to change prices, register PLUs or vendors, etc.
- Direct access to 999 PLUs from the keyboard.
- Drill down menus.
- Printing of the scale menus.
- Programmable macros: recording of a sequence of keys

to create direct access to any task (reopening of receipt, lists, change in batcher number, etc.).

- Sales and management reports: sales (by article, vendor, time frames, last month, etc.), margins, balance available in the cash drawer, modified PLUs, etc.
- Fast and reliable communication between scales, with PC and mobile devices (via DWS).
- Stocks management on the scale.
- Stock / order mode.
- 10 types of generic traceability (for meat, fish, fruit, vegetables, etc.) up to 99 products. Included in the prevailing European legislation on bovine traceability.

Capacity / Accuracy

- Multi-range (3,000 divisions): 6 kg / 2 g - 15 kg / 5 g.
- Optional:
 - > Mono-range (3,000 divisions): 15 kg / 5 g or 30 kg / 10 g.
 - > Multi-range (3,000 divisions): 15 kg / 5 g - 30 kg / 10 g.
 - > Mono-range (6,000 divisions): 12 kg / 2 g or 30 kg / 5 g.

Formats

- Flat.
- Pole.
- Double body.
- Self-service.
- Hanging.

Construction

- Highly resistant ABS plastic casing in counter formats.
- Stainless steel casing in hanging format.
- Stainless steel plate.
- Access to all non-metrological components without the need to unseal the scale.

Displays

- Backlit LCD segment display (W150.2 x H43.4 mm) for vendor and buyer (showing weight, price/ kg, total, tare, vendors and name of article).
- Available model with 7" backlit LCD segment displays for vendor and buyer (showing weight, price / kg, amount, tare, vendor and name of the article, occupied memory indicators and real-time subtotal detail).
- Optional:
 - LCD matrix graphic display (W134 x H41 mm) for vendor and buyer. Possibility of showing: logos, profitability codes and warning messages sent from a PC (on vendor display) and advertising messages with animated effects on buyer display.

Printer

- Models available with 1 printer for receipts, 1 printer for labels (also suitable for receipts by changing the paper roll and the working mode) or 1 easy loading printer (for immediate loading of receipts).
- 54 mm thermal printer.
- Resolution: 8 dots/mm.
- Speed: 100 mm/sec. (50 mm/sec. in easy loading).
- Cassette for immediate paper roll change (in label printers).
- Optional:
 - Linerless without autocutter (in label printers).

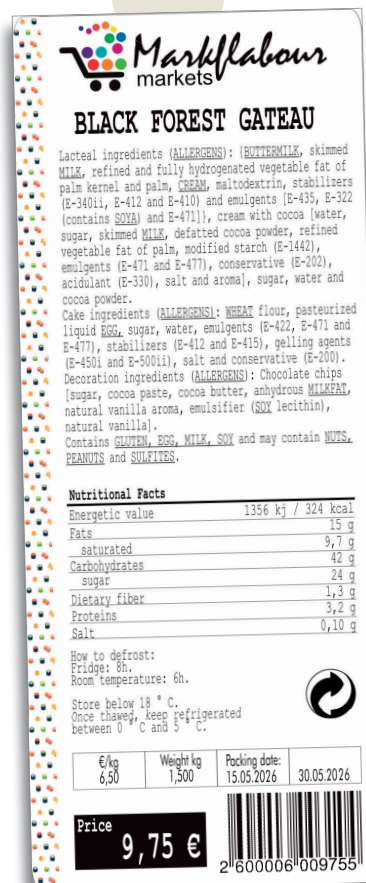


Receipts

- 15 fonts (6 monospaced + 9 multispaced: more modern and legible).
- Up to 75 items.
- 2 fixed formats + 2 programmable formats.
- 4 logos per receipt (except for Easy Loading model).
- Barcodes: EAN-13, EAN-128 and Code 128 and QR*.
- Name of vendor.
- 9 payment methods.
- Total in national currency and another 3 currencies.
- Discounts per line and total.
- Loyalty points.
- Customers on account.
- Recipes.

Labels

- 15 fonts (6 monospaced + 9 multispaced: more modern and legible).
- From W30 x L30 mm to W60 x L150 mm.
- 20 fixed formats + 40 programmable formats.
- 100 logos.
- Barcodes: EAN-13, EAN-128, Code 128 and QR*.
- 60 fields of information.
- 100 programmable texts.
- Manual and automatic pre-packing modes.
- 3 levels of totals.
- Printing of "n" identical labels.
- Printing with 90°, 180° and 270° rotation.
- Automatic adjustment of the paper detection sensor.
- Packaging date, expiry date and extra date (for any application).
- Alphanumeric batch number.
- 10 types of generic traceability (for meat, fish, fruit, vegetables, etc.) up to 99 products. Included in the prevailing European legislation on bovine traceability.



* It prints EAN-13, EAN-128, Code 128 and QR barcodes; it reads EAN-13 and EAN-128 barcodes.

Food information

- Compliance with EU Regulation 1169/2011 on the provision of food information to consumers as of 13 December 2016:
 - > Minimum letter size: 1.2 mm.
 - > Effect (**bold**, underlined or **both**) for each character in the text.
 - > Possibility of using the general text "G" (3,000 characters) for ingredients, in lower case or UPPER CASE to highlight allergens.
 - > Possibility of including a table of nutritional facts.
 - > Free texts (20 x 24 characters).
 - > For direct sale receipts and labels: possibility of indicating in the PLU name (with an * or other symbol) those that contain allergens and programming a text, such as "* Consult allergens".
 - > Possibility of printing 2 labels for each operation: programmable by PLU, configurable information, 2nd automatic or manual label (also to be used as promotional labels).

Communications

- TCP/IP Ethernet for interconnection and connection to PC.
- RS-232, for connection to scanner (except for Easy Loading model).
- Optional:
 - > USB.
 - > Wi-Fi.

Security

- Access to different protected programming menus via configurable passwords.

Interconnection

- Up to 10 scales per section.

Connectivity with other devices

- PC.
- Barcode scanner (powered by the scale -5 VDC-) to read EAN-13 and EAN-128 barcodes (RS-232. Except for Easy Loading model).
- Cash drawer (RJ11).
- Queueing system (for hanging scales).
- Connectable to a single load cell weighing platform, up to 400 x 400 mm max., and up to 30 kg. Consult compatible scales formats.

Software

(See section on software)

PC Software:

- DFS:
 - > Programming of scales.
 - > Receipt of sales data.
 - > Data backup copy.
 - > Graphic design of receipts and labels (DLD).
- Integration tools: in Windows or Linux to facilitate communication with the Back-Office.

Scale firmware:

- DWS (Dibal Web Server):
 - > Allows access to the information on each scale from any computer or mobile device with an Internet browser.

Power supply

- Mains: 110 up to 230 VAC.
- Depending on models, high-performance internal rechargeable battery: up to 52 hours of autonomy (calculated for 1,500 receipts, with 3 items per receipt)* and connector to external 12 V battery.

Energy consumption

- 6.5 - 91 W (depending on the conditions of use).

* With segment display and back lighting disconnected. The charging and autonomy times may vary considerably in accordance with the temperature, age and condition of the batteries, use of back lighting, frequency of use of the printer, interconnection, etc.

Options



> Graphic display (W134 x H41 mm).

Option	Characteristics	Ref.
Capacity 15 kg / 5 g	Mono-range (3,000 divisions).	...N__ (*)
Capacity 30 kg / 10 g	Mono-range (3,000 divisions).	...Y__ (*)
Capacity 15 kg / 5 g - 30 kg / 10 g	Multi-range (3,000 divisions).	...F__ (*)
Capacity 12 kg / 2 g	Mono-range (6,000 divisions).	...V__ (*)
Capacity 30 kg / 5 g	Mono-range (6,000 divisions).	...P__ (*)
Graphic display (W134 x H41 mm)	LCD matrix graphic display for buyer and vendor. (Check availability of models).	Consult
USB	USB port.	Consult
Linerless	Label or receipt on continuous adhesive paper without supporting paper (in label printer). Without autocutter.	Consult
Wi-Fi	Wireless communications (IEEE 802.11n).	Consult
DFS Software	Scale configuration, receipt of sales data for processing with other IT applications, data backup (LBS), and labels and receipts graphic design (DLD). (See section on software).	7340F1U1
		7340FNU1
		7340D1U1
		7340DNU1
Technical DWS Firmware	For the remote configuration of the scale. (See section on software).	7340W101
Full DWS Firmware	For the remote configuration of the scale and processing of the information generated. (See section on software).	7340WN01
Metrological verification (M)	According to EU weighing directives. (See section on equipment metrological verification).	Consult

(*) The scale references with this capacity are obtained by replacing the last characters of the reference for the standard scale with the indicated ending.

Accessories



Ref: BCR73

Small Italian plate
L357 x W235 x H55 mm.



Ref: BCR74

Large Italian plate
L407 x W284 x H60 mm.



Ref: BU-C1229

Flat plate for hanging scales
Instead of the semi deep plate.
L360 x W280 mm.



Ref: BC-C039

Deep plate for hanging scales
Instead of the semi deep plate.
Ø310 x H70 mm.



Ref: 49-M27

Manual cash drawer
L410 x W415 x H99 mm.



Ref: 49-S34

Automatic cash drawer
L410 x W415 x H99 mm.

D-500 series



Ref: BHN99

Interconnection switch

For scales with rechargeable internal battery.



Ref: BHN85

Battery for the switch

Power battery for the BHN99 interconnection switch.



Ref: BL-P4642

Adapter for receipt printing in 2" label printer

Required for standard size receipt rolls.



Ref: 497540A

Adapter for printing narrow labels



Ref: BCH18

Barcode scanner

Includes connection to the scale.



Ref: 496140NA

Base

Cabinet for self-service format.



Consult

Linerless label box (30 rolls)

Roll width: 58 mm.
Roll length: 65 m.
Core inner diameter: 40 mm.
Outsite diameter of the roll: 97 mm.



Consult

Linerless label pallet (60 boxes)

Roll width: 58 mm.
Roll length: 65 m.
Core inner diameter: 40 mm
Outsite diameter of the roll: 97 mm.

Note:

- The references correspond to standard models: Dark gray ABS plastic or stainless steel casing (depending on the format), backlit LCD segment display, stainless steel flat plate in counter scales (semi deep stainless steel plate in hanging scales), cash drawer connector, queueing system connector in hanging scales and TCP/IP Ethernet communications. Capacity/Accuracy: 6 kg / 2 g – 15 kg / 5 g.